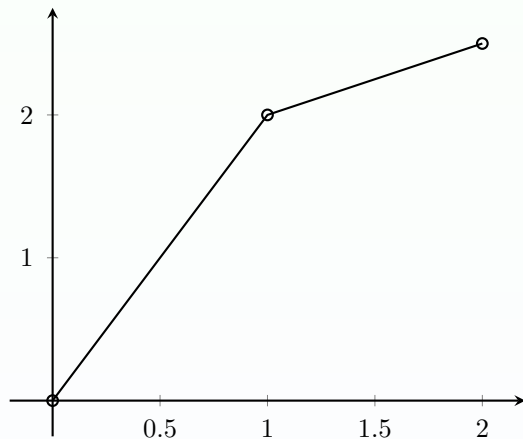


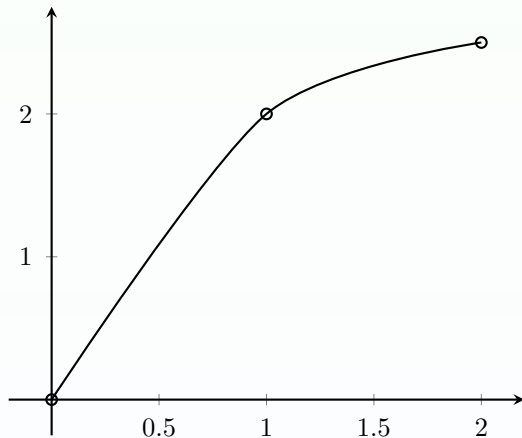
Linear



```
1 \begin{axis}[enlargelimits=true]  
    \addplot [sharp plot,]  
3         coordinates  
        {(0,0) (1,2) (2,2.5)};  
5 \end{axis}
```

Fonte: Adaptado de Feuersänger (2021, p. 78)

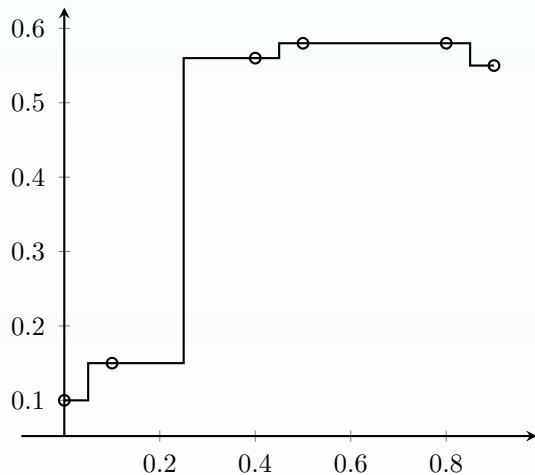
Smooth



```
1 \begin{axis}[enlargelimits=true]  
  \addplot [smooth,]  
3 coordinates{  
    (0,0)(1,2)(2,2.5)};  
5 \end{axis}
```

Fonte: Adaptado de Feuersänger (2021, p. 78)

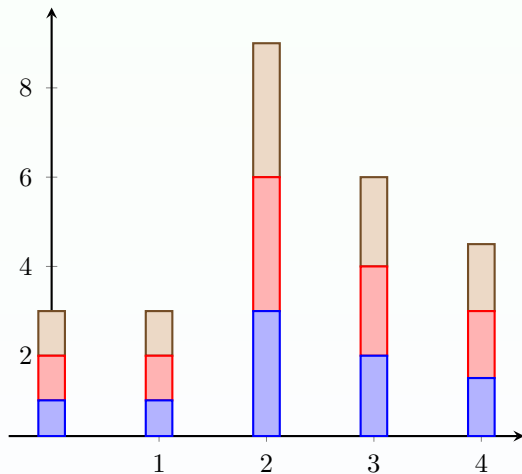
constant



```
1 \begin{axis}[enlargelimits=auto]
   \addplot [const plot mark mid,]
3     coordinates {
        (0,0.1) (0.1,0.15)
5         (0.4,0.56) (0.5,0.58)
        (0.8,0.58) (0.9,0.55)};
7 \end{axis}
```

Fonte: Adaptado de Feuersänger (2021, p. 79)

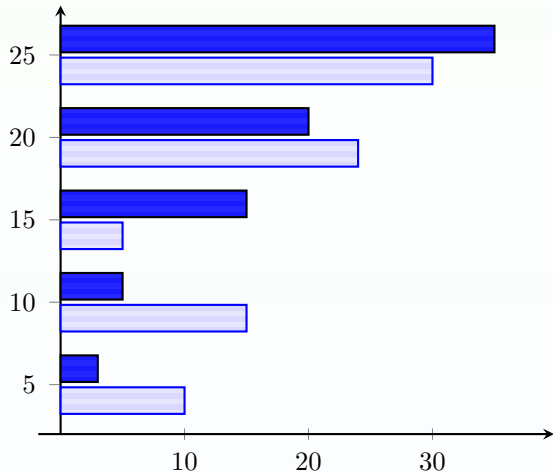
bars



```
1 \begin{axis}
   \addplot [const plot,]
3   coordinates {
   (0,0.1) (0.1,0.15)
5   (0.4,0.56) (0.5,0.58)
   (0.8,0.58) (0.9,0.55)};
7 \end{axis}
```

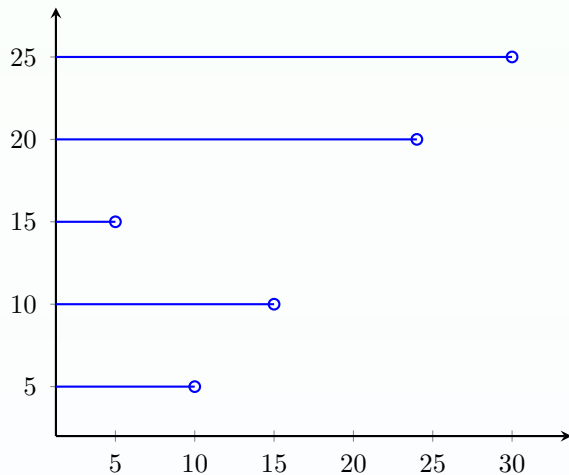
Fonte: Adaptado de Feuersänger (2021, p. 80)

box



```
1 \begin{axis}
   [xbar,enlargelimits=0.15,]
3
   \addplot [draw=blue,mark= none,
5     pattern=
       horizontal lines light blue,]
7     coordinates {
           (10,5) (15,10) (5,15)
9           (24,20) (30,25)};
   \addplot [draw=black,mark= none,
11     pattern=
       horizontal lines dark blue,]
13     coordinates {
           (3,5) (5,10) (15,15)
15           (20,20) (35,25)};
   \end{axis}
```

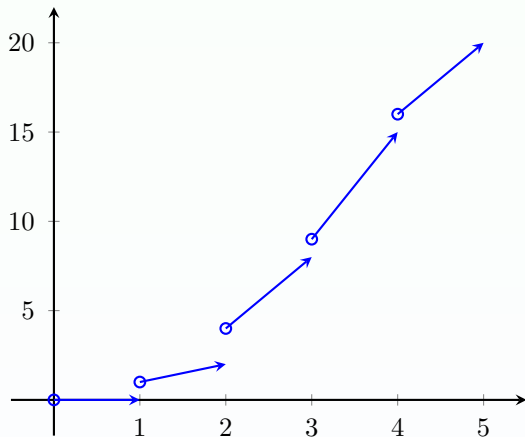
comb



```
\begin{axis}[xcomb,  
2   enlargelimits=0.15]  
  
4   \addplot [draw=blue,]  
        coordinates {  
6       (10,5) (15,10)  
        (5,15) (24,20) (30,25)};  
8 \end{axis}
```

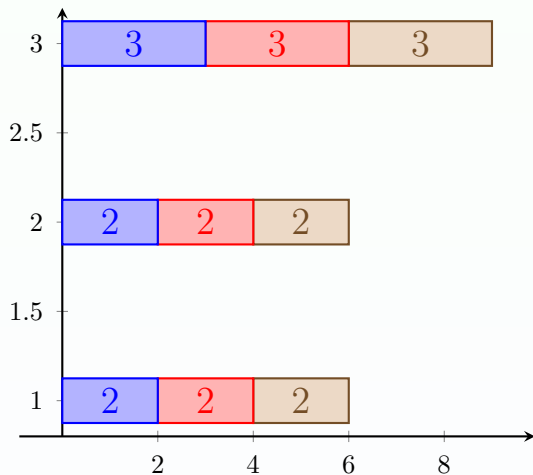
Fonte: Adaptado de Feuersänger (2021, p. 89)

quiver



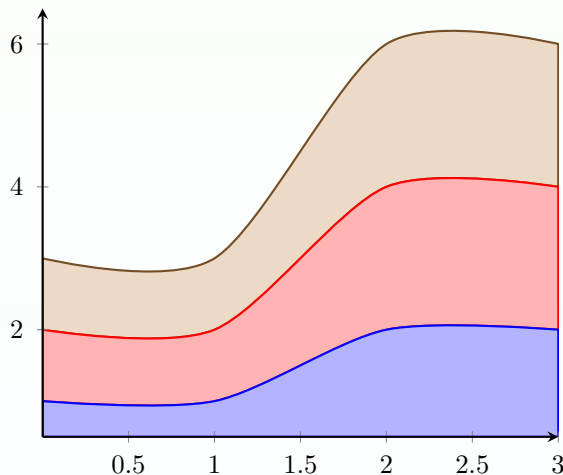
```
\begin{axis}[enlargelimits=true]
  \addplot[blue,
    quiver={u=\thisrow{u},
            v=\thisrow{v}},
    -stealth]
    table
    {x y u v
     0 0 1 0
     1 1 1 1
     2 4 1 4
     3 9 1 6
     4 16 1 4
    };
\end{axis}
```

stacked



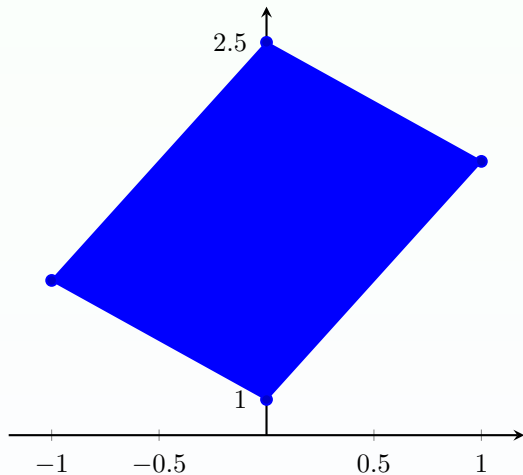
```
\begin{axis}[xbar stacked,  
            nodes near coords,  
            bar width=0.25,  
            enlargelimits=auto]  
\addplot coordinates  
6      {(0,1) (2,1) (2,2) (3,3)};  
\addplot coordinates  
8      {(0,1) (2,1) (2,2) (3,3)};  
\addplot coordinates  
10     {(0,1) (2,1) (2,2) (3,3)};  
\end{axis}
```


area



```
1 \begin{axis}[smooth,  
3     stack plots=y,  
     area style,  
     enlarge x limits=false,]  
5  
7 \addplot coordinates  
   {(0,1) (1,1) (2,2) (3,2)}  
   \closedcycle;  
9 \addplot coordinates  
   {(0,1) (1,1) (2,2) (3,2)}  
   \closedcycle;  
11 \addplot coordinates  
   {(0,1) (1,1) (2,2) (3,2)}  
   \closedcycle;  
13  
15 \end{axis}
```

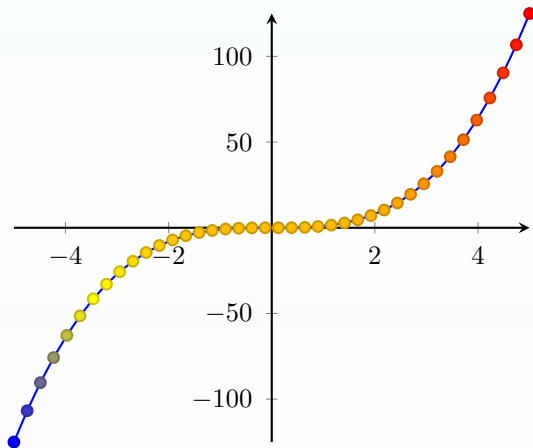
closedcyle



```
1 \begin{axis}  
  \addplot+ [fill] coordinates  
3     {(0,1) (1,2)  
      (0,3) (-1,1.5)}--cycle;  
5 \end{axis}
```

Fonte: Adaptado de Feuersänger (2021, p. 107)

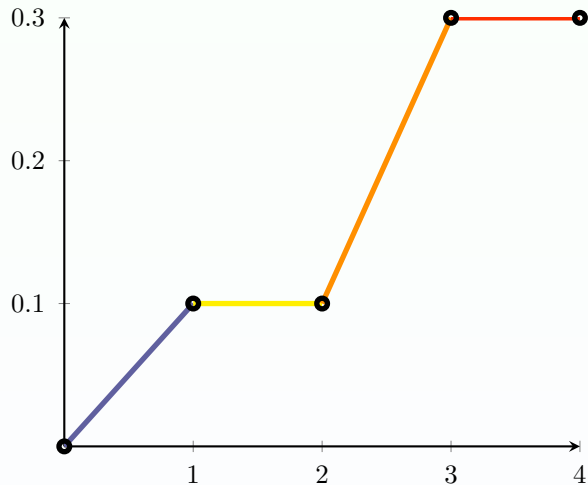
scatter



```
1 \begin{axis}[enlargelimits=true]  
  \addplot+ [scatter, samples=40,  
3          scatter src=y,] {x^3};  
  \end{axis}
```

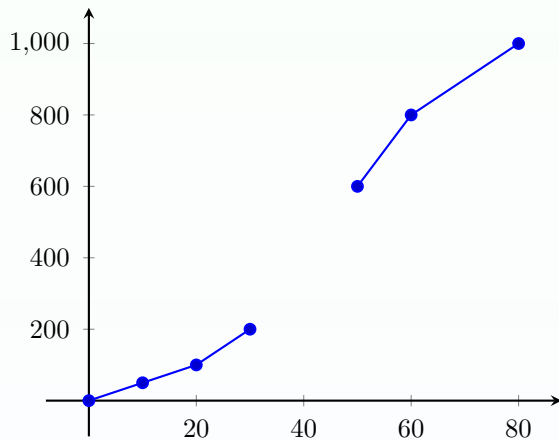
Fonte: Adaptado de Feuersänger (2021, p. 109)

1D colored



```
\begin{axis}
2 \addplot [mesh,
    point meta=explicit,]
4     coordinates {
6         (0,0)    [0]
8         (1,0.1)  [1]
        (2,0.1)  [2]
        (3,0.3)  [3]
        (4,0.3)  [4]};
10 \end{axis}
```

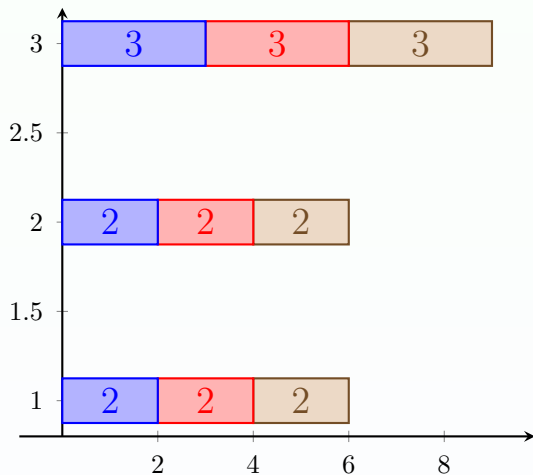
Interrupted



```
\begin{axis}
2   [elargelimits = true]
4   \addplot coordinates {
6       (0,0) (10,50)
8       (20,100) (30,200)
       (50,600) (60,800)
       (80,1000)};
\end{axis}
```

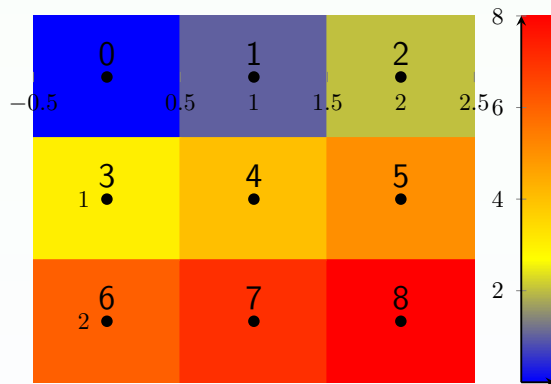
Fonte: Adaptado de Feuersänger (2021, p. 120)

patch



```
1 \begin{axis}[xbar stacked,  
3             nodes near coords,  
             bar width=0.25,  
             enlargelimits=auto]  
5 \addplot coordinates  
   {(0,1) (2,1) (2,2) (3,3)};  
7 \addplot coordinates  
   {(0,1) (2,1) (2,2) (3,3)};  
9 \addplot coordinates  
   {(0,1) (2,1) (2,2) (3,3)};  
11 \end{axis}
```

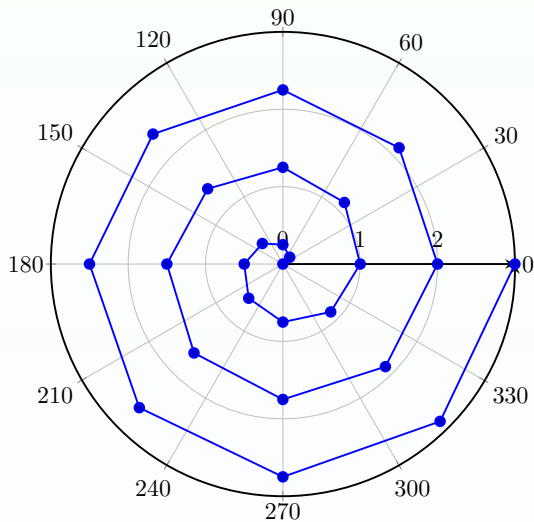
Image



```
1 \begin{axis}[enlargelimits=false,  
    colorbar]  
3   \addplot [matrix plot,  
5     nodes near coords=\coordindex,  
7     mark=*, point meta=explicit,]  
9     coordinates {  
11      (0,0) [0] (1,0) [1] (2,0) [2]  
  
      (0,1) [3] (1,1) [4] (2,1) [5]  
  
      (0,2) [6] (1,2) [7] (2,2) [8]};  
\end{axis}
```

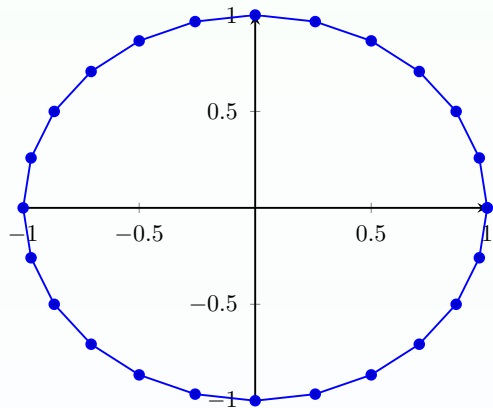
Fonte: Adaptado de Feuersänger (2021, p. 174)

Polar axes



```
\begin{polaraxis}[axis x line= top  
2 \addplot+ [domain=0:3]  
    (360*x,x);  
4 \end{polaraxis}
```

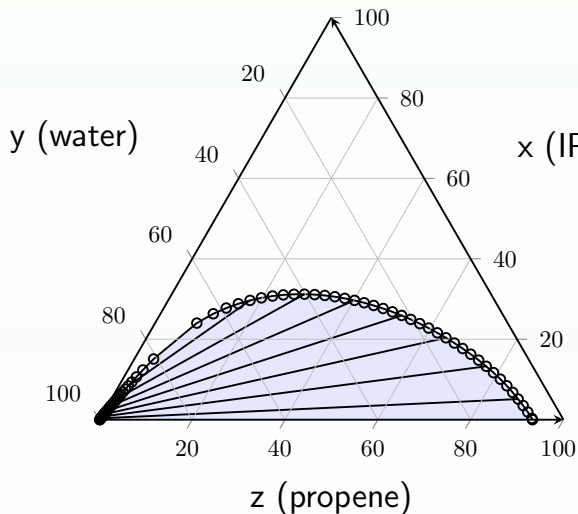

Polar coordinates



```
\begin{axis}
2     \addplot+[data cs=polar,
           domain=0:360] (\x,1);
4 \end{axis}
```

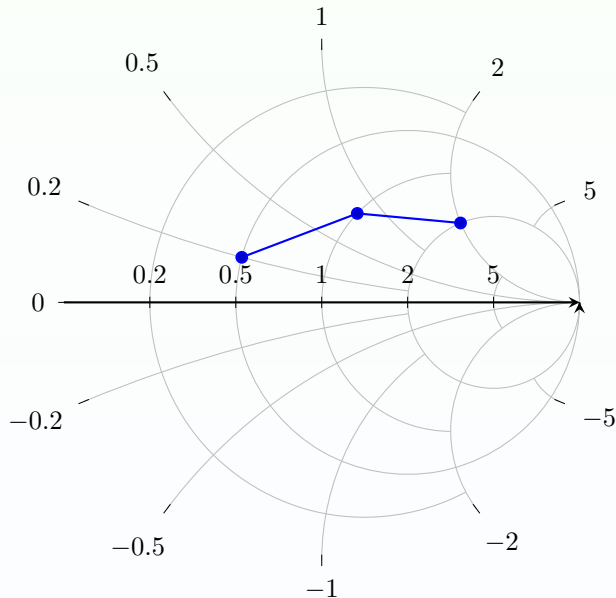
Fonte: Adaptado de Feuersänger (2021, p. 480)

Tieline



```
\begin{ternaryaxis}[
  2   xlabel=x (IPA),
  4   ylabel=y (water),
  6   zlabel=z (propene),
  8   axis on top,]
\addplot3 [
  10  tieline={each nth tie=5},
  12  fill=blue!10,]
table [x=A_IPA,
  14  y=A_water,
      z=A_propene]
{plotdata/ternary_data.txt};
\end{ternaryaxis}
```

Smith



```
\begin{smithchart}  
2 \addplot coordinates {  
  (0.5,0.2) (1,0.8) (2,2)  
4 };  
\end{smithchart}
```

Referências



FEUERSÄNGER, C. **Manual for Package pgfplots: 2D/3D Plots in L A TEX, Version 1.18.1.** [S.l.: s.n.], 2021.
Disponível em: <https://www.ctan.org/pkg/pgfplots>. Acesso em: 21 jul. 2021.