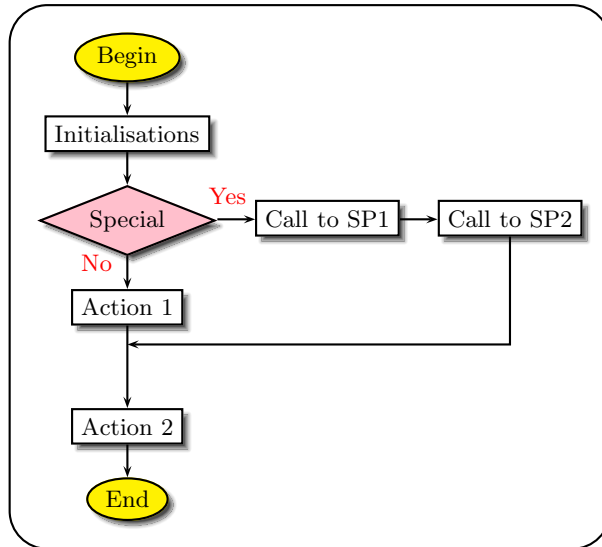


Flow diagram with the psmatrix environment



```

\usepackage{pstricks}
\usepackage{pst-node}
\definecolor{Pink}{rgb}{1.,0.75,0.8}

\small
\psframebox[lineararc=0.5,cornersize=absolute]{%
  \psset{shadowcolor=black!70,blur=true}%
  \begin{psmatrix}[rowsep=0.4,colsep=0.5]
    \psovalbox[fillstyle=solid,fillcolor=yellow,shadow=true]{Begin} \\
    \psframebox[shadow=true]{Initialisations} \\
    \psdiabox[fillstyle=solid,fillcolor=Pink,shadow=true]{Special} &
      \psframebox[shadow=true]{Call to SP1} & \psframebox[shadow=true]{Call to SP2} \\
    \psframebox[shadow=true]{Action 1} \\
    ~ \\
    \psframebox[shadow=true]{Action 2} \\
    \psovalbox[fillstyle=solid,fillcolor=yellow,shadow=true]{End}
  % Links
  \ncline{->}{1,1}{2,1}
  \ncline{->}{2,1}{3,1}
  \ncline{->}{3,1}{4,1}<\textcolor{red}{No}
  \ncline{->}{4,1}{6,1}
  \ncline{->}{6,1}{7,1}
  \ncline{->}{3,1}{3,2}~\textcolor{red}{Yes}
  \ncline{->}{3,2}{3,3}
  \ncbar[angleA=-90,armB=0,nodesepB=0.25]{->}{3,3}{4,1}
  \end{psmatrix}%
}

```