



[ The (La)TeX case study ]

Alexandre Gaudeul

[alexandre.gaudeul@univ-tlse1.fr](mailto:alexandre.gaudeul@univ-tlse1.fr)

GREMAQ - University of Toulouse

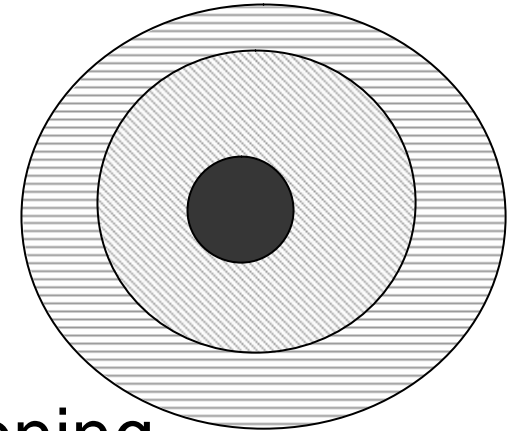
<http://www.idei.asso.fr>

# [ The case study project ]

- ✍ Is part of a wider effort by economists to understand the open-source phenomenon.
- ✍ Consists in gathering data (interviews, statistics) on a specific open-source project.
- ✍ Is aimed towards open-source developers and policy makers as well as economists.

# [ Plan of the presentation ]

- ✍ A comparison with Linux.
- ✍ Preliminary findings.
  - ✍ Output: the code.
  - ✍ Process: the project's functioning.
  - ✍ Framework: the organization.
- ✍ Areas for future research.
- ✍ A call for contributions, comments, criticism!



# Linux and TeX

<b>Linux</b>	<b>TeX</b>
Developed in the 90s	Developed in the 80s
Operating system	Typesetting system
Hackers	Academics and publishers
Developers' oriented	Users' oriented
Charismatic leadership	Messianic leadership
GNU	BSD

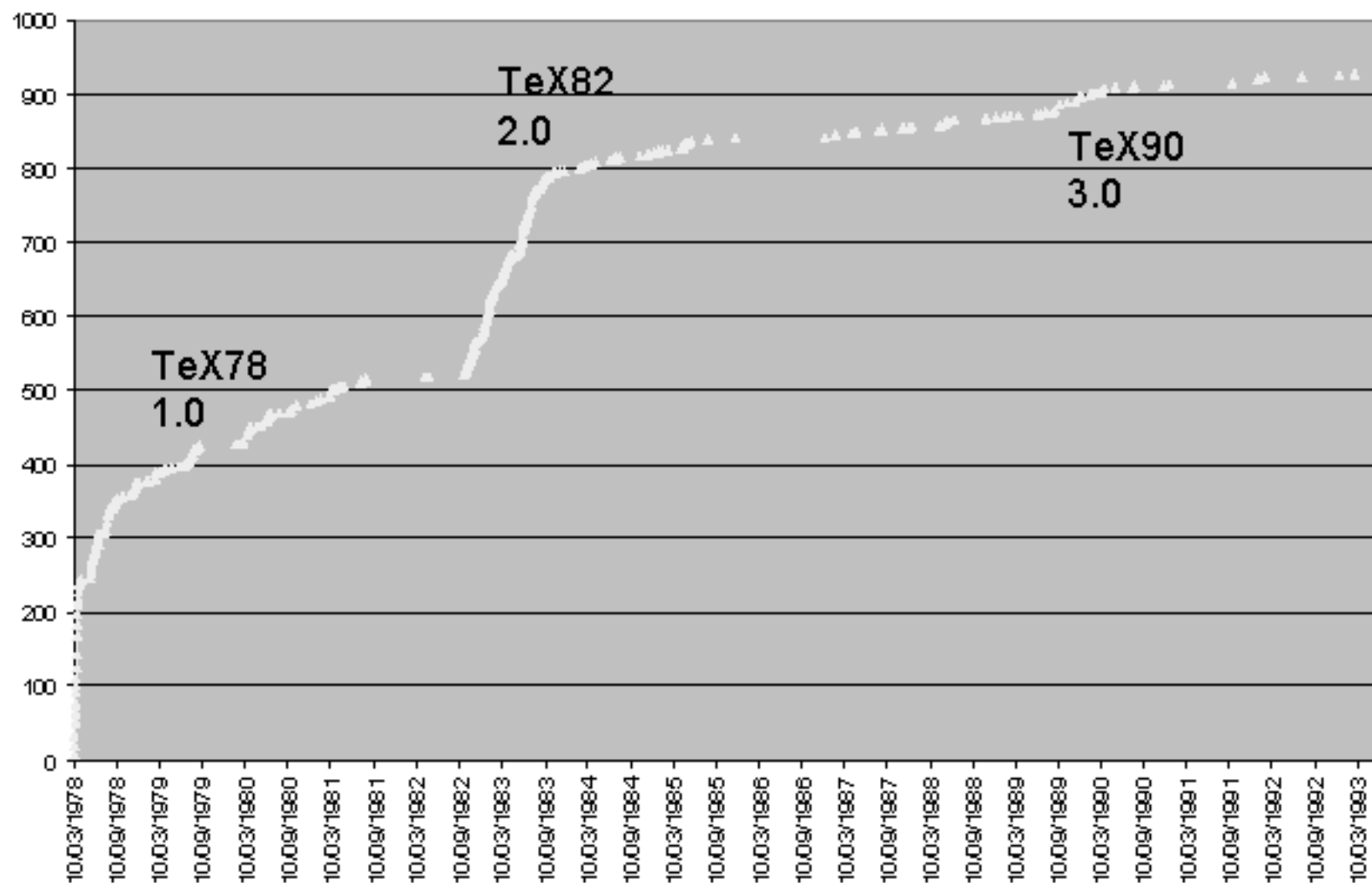
# [ The code's development. ]

- ✍ The stages in the development of the TeX core—78, 82, 90.

## ➔ The ideal code

- ✍ Depends on the stage in the evolution in the software—monolithic vs. modular.
- ✍ There is a “breaking point” when the core cannot anymore accommodate new needs—NTS, Omega, ConTeXt.

Cumulative number of bugs in TeX by day of discovery.



# [ The process and its dynamics. ]

- ✍ The difference between the development of the software and its diffusion.

- ✍ Competition vs. centralization.

- ✍ The chronology.

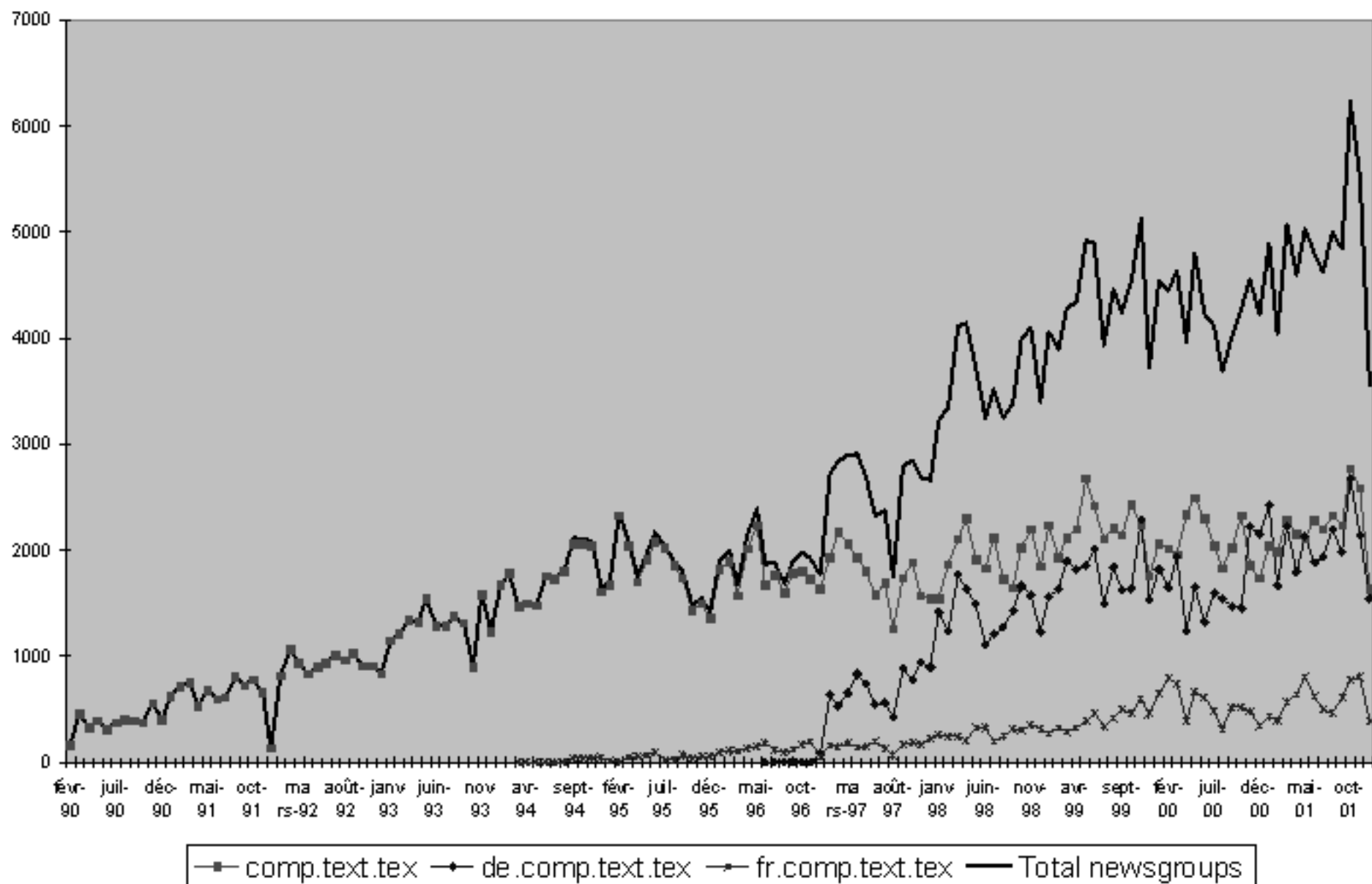
➔ How dependent is one onto the other?

# [The process and its dynamics.]

- ✍ The limits that are specific to open-source development and diffusion.
- ✍ Coordination methods.
- ✍ Concept and tools.
- ✍ Involvement over time.



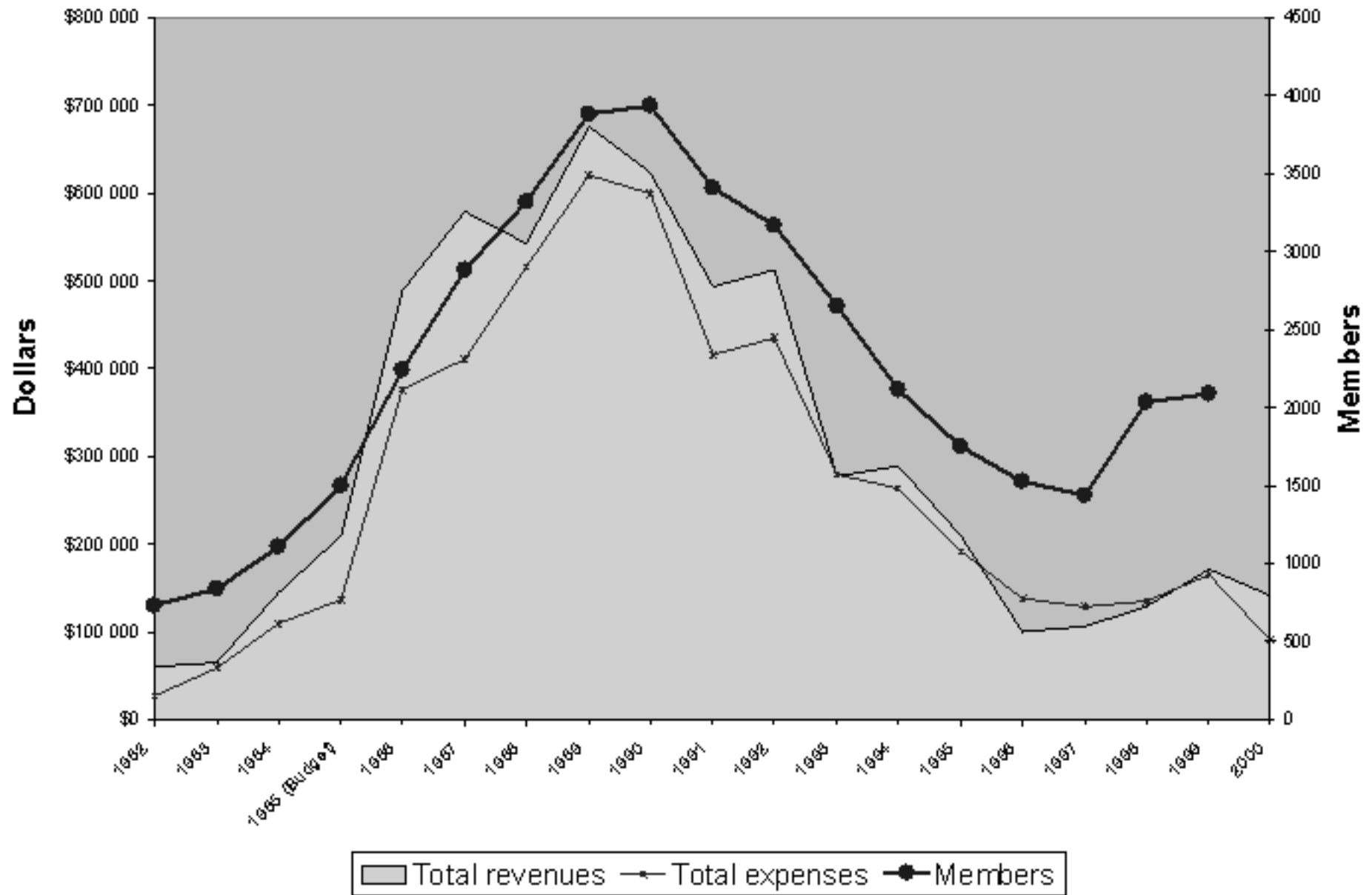
Number of postings to TeX newsgroups by months.



# [ The TeX rules and culture. ]

- ✍ Changed over time;
    - ✍ Emergence of new development teams.
    - ✍ Emergence of new users' groups.
    - ✍ Solidification of rules into institutions.
  - ✍ Was user-oriented from the beginning on.
- ➔ How was the link between users and developers maintained?

TUG revenues and membership by year.



# [ Questions still pending ]

- ✍ The influence of commercial development on TeX.
- ✍ A comparison with commercial typesetting software.
- ✍ The maintenance of the software and its practical difficulties.
- ✍ The finer details of how projects are coordinated and led.

# [ A call for contribution/criticism ]

- ✍ Please download my paper or read it in the TUGboat.
- ✍ Note my mistakes and omissions and report them to me.
- ✍ Make suggestions.
- ✍ My email:  
[alexandre.gaudeul@univ-tlse1.fr](mailto:alexandre.gaudeul@univ-tlse1.fr)